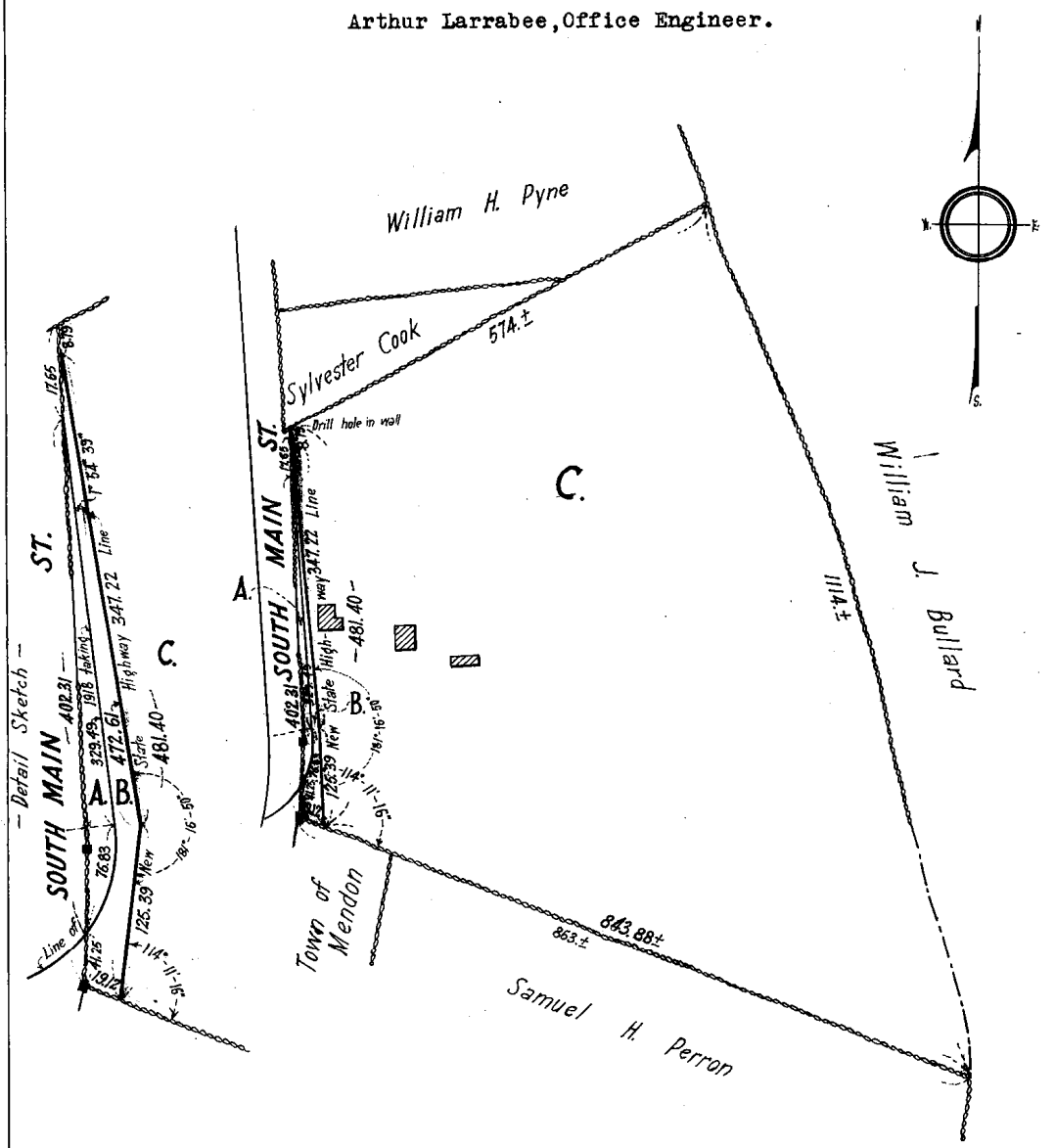


5594B

Subdivision of Land shown on plan 5594^A
 Filed with Cert. of Title No. 461 Wor. Registry District of Worcester County
 LAND IN MENDON
 AUGUST 18, 1932.
 Commonwealth of Massachusetts.
 Dept. of Public Works.
 Arthur Larrabee, Office Engineer.



WORCESTER REGISTRY DISTRICT,
 RECEIVED FOR REGISTRATION
 DEC 19 1935
 10 O'CLOCK 10 m 0 AM
 Noted on Certificate No. 2199
 in Registration Book 11

Separate certificates of title may be issued
 for lots A, B and C as shown hereon,
 By the Court
Charles A. Southworth
 Recorder.
 OCT. 6, 1932.

Copy of part of plan
 filed in
 LAND REGISTRATION OFFICE
 AUG. 18, 1932.
 Scale of this plan 160 feet to an inch
 C. B. Humphrey, Surveyor for Court